

MOBILE

by MULTIframe™



multi frame - mobile

– modulares Rahmensystem in ABS Transportkoffer

■ 1 System - je nach Bedarf Aufbau in 4 unterschiedlichen Formaten

Startmodul 250	Startmodul 302
- 100x200 cm	- 100x200 cm
- 100x248 cm	- 100x300 cm
- 200x200 cm	- 200x200 cm
- 200x248 cm	- 200x300 cm

■ Bautiefe nur 120 mm

■ einfache Montage

■ ABS Transportkoffer mit Schaumstoffeinlagen, Rollen und Griff

■ ca. 29 kg Transportgewicht

■ beliebig erweiterbar mittels Anbaumodulen

– modular display in ABS hardcase

■ 1 system - 4 sizes

starter module 250	starter module 302
- 100x200 cm	- 100x200 cm
- 100x248 cm	- 100x300 cm
- 200x200 cm	- 200x200 cm
- 200x248 cm	- 200x300 cm

■ depth only 120 mm

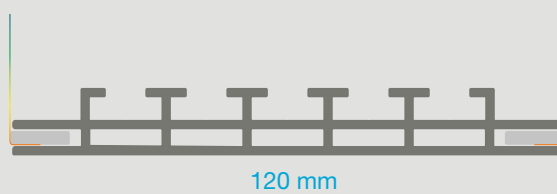
■ easy to assemble

■ ABS hardcase with special foam lining, wheels and handle

■ approx. 29 kg transport weight

■ easy to expandable with extension modules

Profildesign / profile design



multi frame - mobile

– Anbaumodul

- in 3 Breiten für alle Höhen erhältlich (inkl. 1 Stellfuß)
 - 75 cm
 - 85 cm
 - 100cm
- ABS Transportkoffer mit Schaumstoffeinlagen
- ca. 11 kg Transportgewicht

– extension module

- in 3 widths available for all highs available (incl. 1 base)
 - 75 cm
 - 85 cm
 - 100cm
- ABS hardcase with special foam lining
- approx. 11 kg transport weight

Aufbaubeispiel

**3x Startmodul + 3x Anbaumodul /
assembly example
3x starter module + 3x extension module**



■ Variante 1 / variant 1



■ Variante 3 / variant 3



■ Variante 2 / variant 2



■ Variante 4 / variant 4

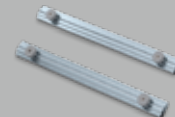


Zubehör / accessories

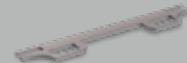
Eckverbinder 90° /
corner connector 90°



gerade Verbinder /
straight connector



Verbinderplatte
Höhenausgleich /
height regulation for
connection plates



Verbinderplatte
gerade /
connecting plate
straight



Verbinderplatte 90° /
connecting plate 90°



Stellfüße /
bases



Profile in diversen
Farben erhältlich /
profiles in various
colours available



Systemdetails / system details

